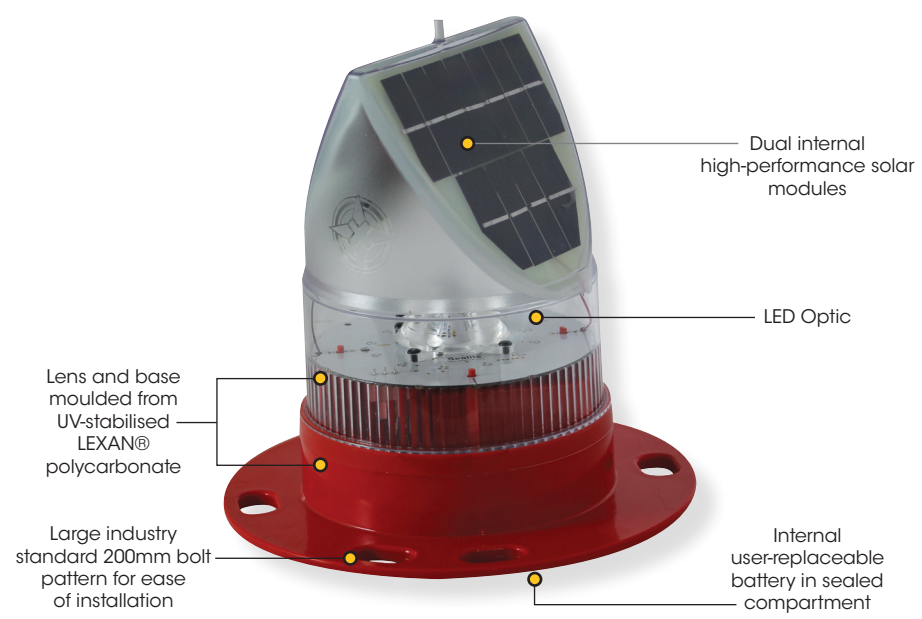


2-3NM+ Solar Marine Lantern

SL-70

This equipment complies with requirements of the U.S. Coast Guard in 33 CFR part 66



The Sealite Advantage

- IR programmable
- Reliable year-round operation in low sunlight conditions
- 256 IALA flash patterns
- User-replaceable battery in sealed battery compartment
- NiMH battery for long service life & wide temperature range
- Multiple intensity settings
- ON/OFF storage switch
- IP68 waterproof

The Sealite SL-70 is exceptional in its unique ability to be able to 'track the sun' and operate reliably in low sunlight conditions. The SL-70 has been proven to operate as a 2-3+ nautical mile compact buoy lantern in various low sunlight environments such as Britain, Canada and Europe.

Made from tough, durable polycarbonate and using the latest high intensity LEDs, the SL-70 lantern boasts dual high-performance solar modules. These solar modules are angled to obtain maximum sunlight capture, allowing the unit to operate reliably in a range of low sunlight environments.

The SL-70 can be installed in minutes and requires no operator intervention. The flash characters are easily adjusted onsite by the user, and the lantern has a permanent ON/OFF switch for easy storage.

The SL-70 comes with standard rotary switches for convenient in-field changes of flash characters and intensity selection. In addition, the unit may be provided with an IR programmer for added functionality. Programmable features include; flash code adjustment, battery diagnostics and lux adjustment.

Optional GPS Synchronisation

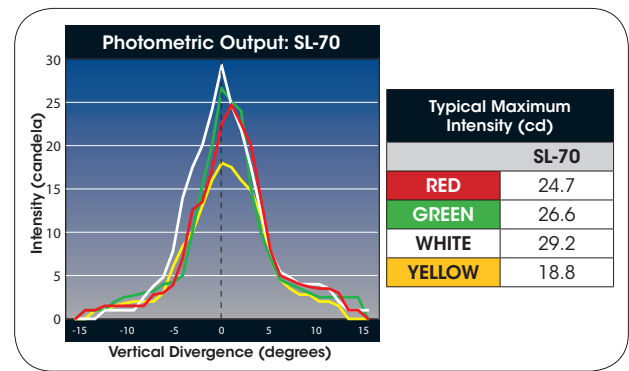
The SL-70 is available with optional GPS Synchronisation. Two (2) or more lights can be synchronised to flash in unison via an internal GPS module. When lanterns flash in synchronisation they can be clearly distinguished from other nav aids and confusing background lighting - ideal for rivers, marina entrances, channel marking and aquaculture.

Optional Light Configuration

In high sunlight regions the SL-70 intensity settings may be increased to provide a range of >3 nautical miles (colour dependant).

Optional Larger Battery Pack

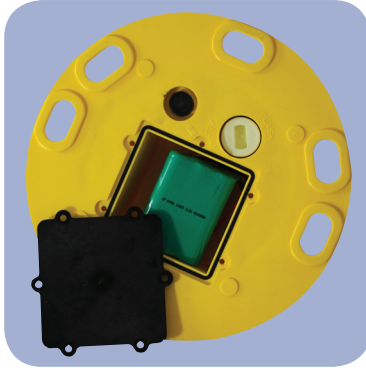
In regions where additional autonomy is required, the SL-70 can be supplied with a larger 16Ah battery pack - this greatly extends the operational autonomy.



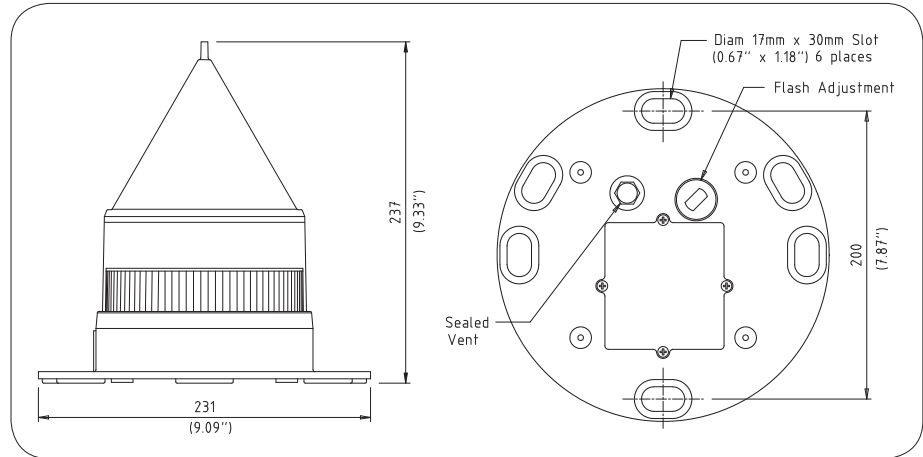
2-3NM+ Solar Marine Lantern

SL-70

V1_2015



User-replaceable battery



SPECIFICATIONS* SL-70

Light Characteristics

Light Source
Available Colours
Typical Maximum Intensity (cd)†
Visible Range (NM)

Horizontal Output (degrees)
Vertical Divergence (degrees)
Available Flash Characteristics
Intensity Adjustments
LED Life Expectancy (hours)

Electrical Characteristics

Current Draw (mA)
Circuit Protection
Nominal Voltage (V)
Autonomy (days)
Temperature Range

Solar Characteristics

Solar Module Type
Output (watts)

Power Supply

Battery Type
Battery Capacity (Ah)
Nominal Voltage (V)

Physical Characteristics

Body Material
Lens Material
Lens Diameter (mm/inches)
Lens Design
Mounting
Height (mm/inches)
Width (mm/inches)
Mass (kg/lbs)
Product Life Expectancy

Certifications

CE

IALA
Quality Assurance
Waterproof

Intellectual Property

Trademarks

Warranty*

Options Available

LED
Red, Green, White, Yellow, Blue
Red - 24.7 Green - 26.6 White - 29.2 Yellow - 18.8
AT @ 0.74: 2-3+
AT @ 0.85: 2.3-3.5+
360
7
Up to 256 IALA recommended (user adjustable)
Multiple intensity settings
>100,000

Refer to Sealite Power Calculator
Integrated

3.6
>30 (14 hour darkness, 12.5% duty cycle)
-40 to 80°C

Multicrystalline
2.5 (2 x 1.25watt)

High grade NiMH
8
3.6

LEXAN® Polycarbonate - UV-stabilised
LEXAN® Polycarbonate - UV-stabilised
150 / 5⁷/₈
Single LED Optic
200mm bolt pattern
240 / 9¹/₂
231 / 7¹/₈
1.4 / 3¹/₈ (SL-70-16AH 1.6 / 3¹/₂)
Up to 12 years

ANSI C63.4-2009. EN61000-6-3:2007. EN61000-6-1:2007.
IEC61000-4-6:2008. IEC61000-4-3:2010. IEC61000-4-6:2008.
IEC61000-4-2:2008. MIL-STD-810F. MIL-STD-202G
Signal colours compliant to IALA E-200-1
ISO9001:2008
IP68

SEALITE® is a registered trademark of Sealite Pty Ltd
3 years

- IR Programmer
- GPS Synchronisation
- 16Ah battery
- 50mm pole mount adapter plate



* Specifications subject to change or variation without notice
* Subject to standard terms and conditions
† Intensity setting subject to solar availability